



**HONEYWELL  
FORGE**

# HEALTHY BUILDINGS IN BIG TECH

Optimize building health and reassure employees as part of your back-to-business strategy.

---

Honeywell Forge Buildings

---

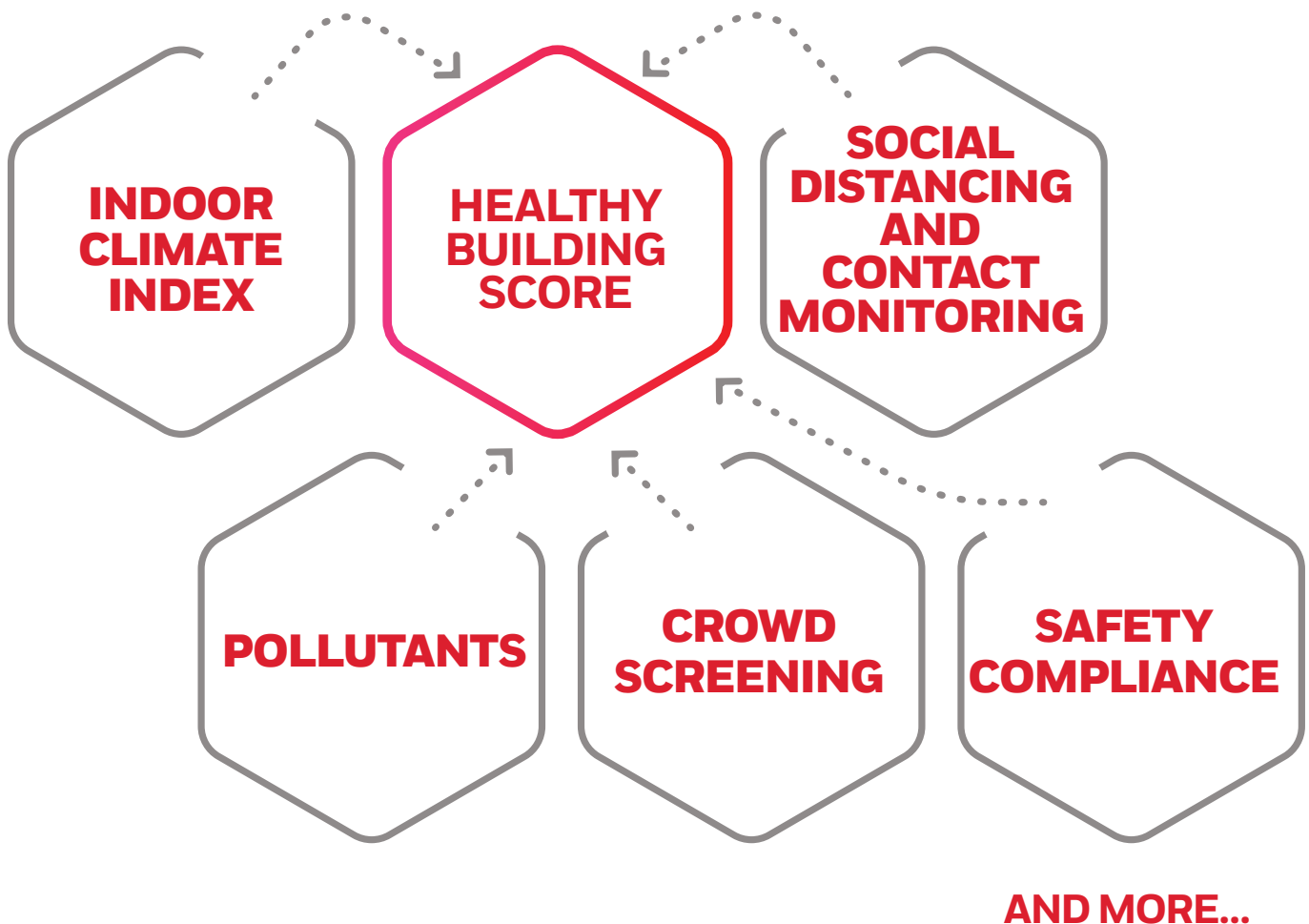


# UNDERSTANDING YOUR HEALTHY BUILDING SCORE

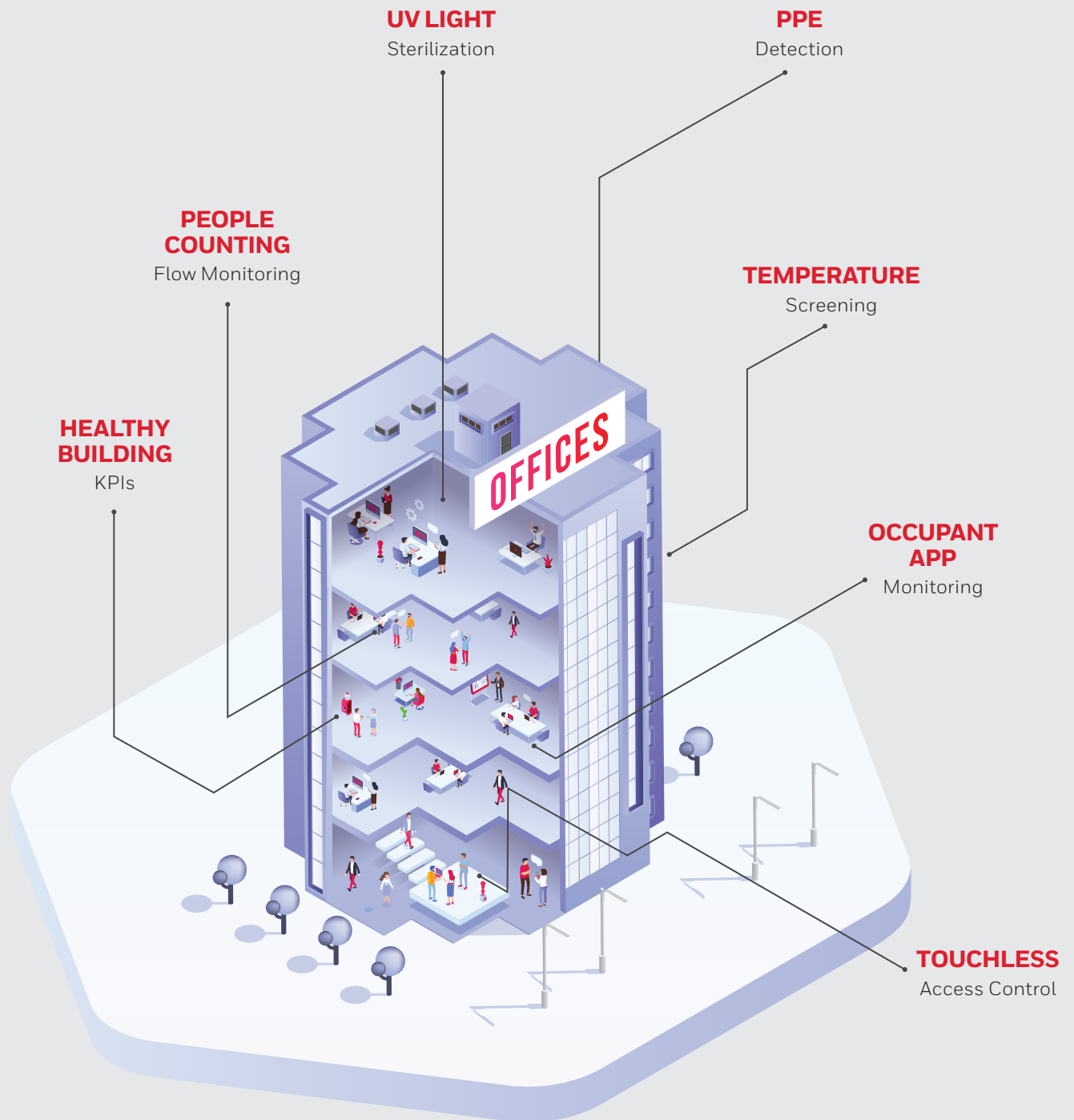
Honeywell Forge integrates building controls, air quality sensors, video feeds, secure access points and more, then applies advanced analytics to calculate a simple, real-time Healthy Building Score. From a single building to your global portfolio, this score helps facilities leadership guide processes, protect compliance and support innovation and productivity as the employees you value return to the office. Companies can also display scores publicly to help employees feel comfortable in their spaces.

## WHAT'S IN THE HEALTHY BUILDING SCORE?.

The Healthy Building Score is aggregated from a variety of data sources, such as:



# CAPTURE DATA FROM EVERY SOURCE



Software, hardware and industry agnostic to help protect your assets, people and processes

# BENEFITS



## GO SITE-SPECIFIC OR PORTFOLIO WIDE:

Site-level performance scores are aggregated for comparison and benchmarking across your portfolio to inform your strategic plan.



## OPTIMIZE FOR A HEALTHIER BUILDING:

Insights and analytics to improve indoor environments and highlight proactive actions.



## PROTECT EMPLOYEE PRODUCTIVITY:

Automate incident response standards. Manage and respond to alerts, anytime, anywhere. to alerts, anytime, anywhere.



## SCALE AND EXTEND THE PLATFORM:

Easily connect and add disparate systems to deliver enterprise-level KPIs.

## THE HEALTHY BUILDING OF THE FUTURE

### SOCIALIZE SAFELY

- Social distancing data
- Contact tracing monitoring
- Vulnerable space isolation

### SAFETY FOR EVERY ROOM, EVERY WORKER

- Airflow and pressure management
- Air quality control
- UV sterilization

### COME AND GO WITH EASE

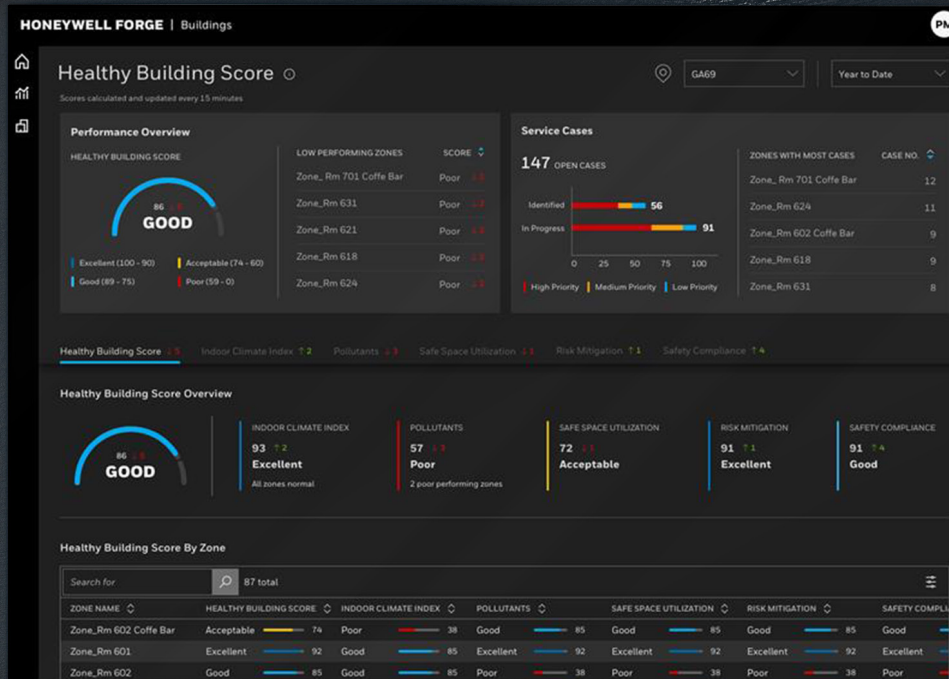
- People temperature screening and PPE
- Frictionless access
- People counting and secure access

### APPLY INTELLIGENT ANALYTICS

- Machine learning
- Predictive models
- Recommendation engines



# MAKE IT SAFER SHOW IT'S SAFER



Real-time insights drive healthier operations

Transparent buildings make happier, more engaged employees.

## UNIFIED ANALYTICS WITH HONEYWELL FORGE

The Healthy Buildings Score is built on Honeywell Forge, an Enterprise Performance Management platform that makes the Healthy Building of the Future possible. It's simple-to-install, brand-agnostic architecture offers a simple SaaS option for your building operation strategy.

**Honeywell Connected Enterprise**

715 Peachtree Street NE  
Atlanta, Georgia 30308  
[www.honeywell.com](http://www.honeywell.com)

Honeywell Forge Connect | Rev | 09/ 2020  
© 2020 Honeywell International Inc.

**THE  
FUTURE  
IS  
WHAT  
WE  
MAKE IT**

---

**Honeywell**